

Kendon 876

Class 7 ROLLER BRAKE TESTER

Connected MOT Equipment

The Kendon 876 is a Single bed roller brake tester for passenger cars, vans and light commercial vehicles and meets the latest DVSA requirements.

In addition to measuring the brake forces per wheel and the difference between the left and right sides, the operator can determine the important quantities rolling resistance, actuation force, ovality (out-of-roundness) and brake fading for each wheel. Special attention has been given to prevent damage to the tyres. The rollers are very quickly stopped when slippage occurs, even during the start-up of the motors. All roller brake testers are equipped with reliable worm gear motors. All moving components are supported by roller bearings for a long and trouble free service.

Specifications

Max. drive over axle load: **GVW 7500kg**

Max axle test load : **4000kg**

Roller speed : **4,5 km/h**

Brake force max. : **14000N**

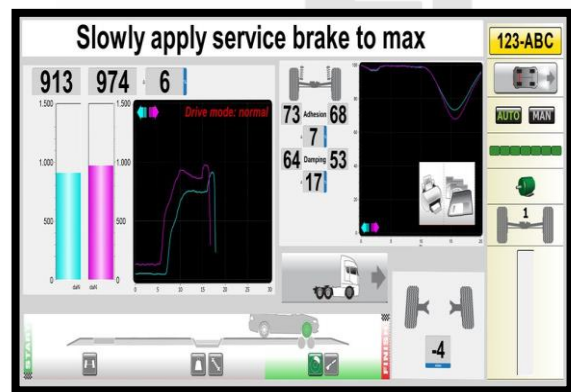
Rollers: **206 x 900mm**

Track: **880 - 2680mm**

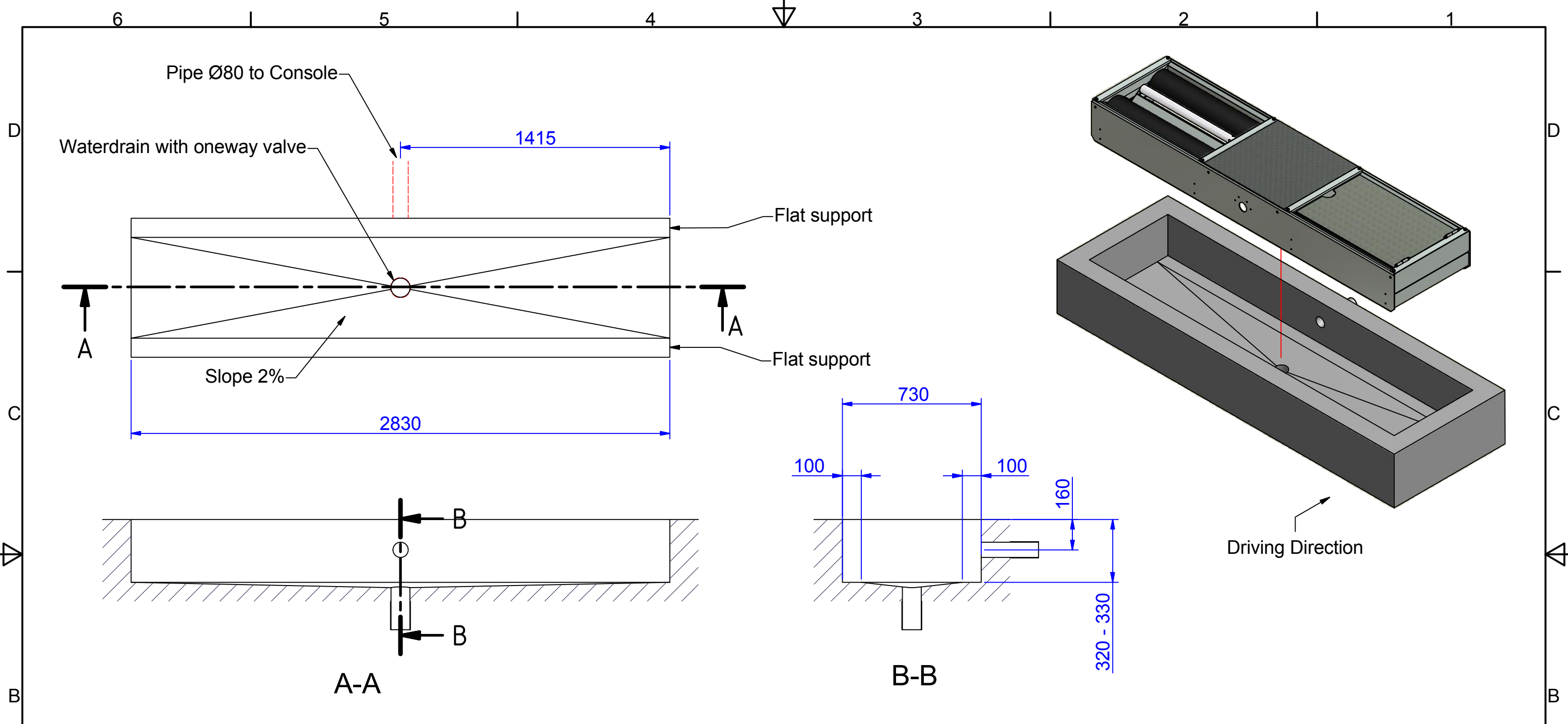
Power supply: **2 x 5.5kW 3Ph 400V/230V 50Hz**

Dimensions: **2810 x 760 x 320 mm**

Chassis: **Hot dip zinc**



All our MOT Testing Equipment is approved by



- NOTES:
1. Dimensions in mm.
 2. General tolerance in the drawing -0, +5mm.
 3. Admissible floor load >30 kN/m².
 4. Recommended distance between RT and display: 2.5-5m.
 5. Use PVC conduits Ø 80mm between RT and display.
 6. Equipment dimensions bed: 281x71x32cm (33cm for weigh system)
 7. Max. electrical connection: 3phase 400v/50Hz/32A, motor 5.5kW.

DISCLAIMER
 This drawing is intended as a general suggestion of a floor lay-out.
 The final construction must be designed and drafted by a local
 engineering company, who will be responsible for complying with all
 local, legal and safety requirements.

altesco [®]	Dimension range mm									
	> 0,5 ...3	> 3 ...6	> 6 ...30	> 30 ...120	> 120 ...400	> 400 ...1000	> 1000 ...2000	> 2000 ...4000	> 4000 ...8000	> 8000 ...12000
	Tolerance mm									
	± 0,05	± 0,1	± 0,2	± 0,3	± 0,5	± 0,8	± 1,2	± 2	± 3	± 4
Drachmeweg 26 2153PA Nieuw Vennep NL T: +31-88-2583700 F: +31-88-2583790	Titel		Floor plan RT9001-2-4 / RT9217							
	Material									
	Finish									
A3	Drawing nr.		314013 rev01							
	Scale		1:20							
	Drawn by		PB		Date		16-5-2011			

