

## Class 1&2 ROLLER BRAKE TESTER

The Kendon 800 for motorcycles, meets the very latest DVSA approval, provides all the features you might need, including vehicle weighing scales, remote control, roller covers and bi- directional operation. Manufactured by Altesco, in Holland

### Specifications

Measuring range: **3kN**

Max. wheel load: **750kg**

Test speed: **2.9km/h**

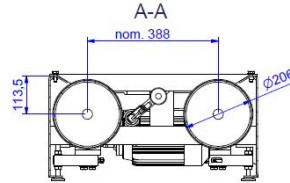
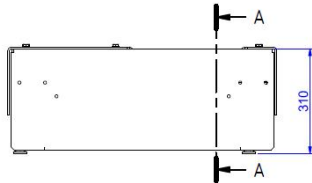
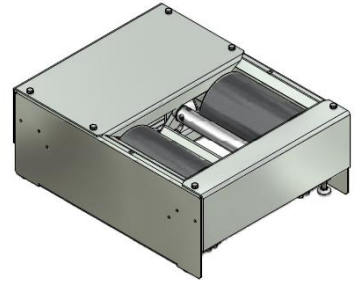
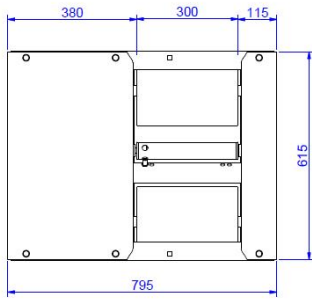
Rollers: **206 x 300mm**

Chassis dimensions: **800 x 620 x 310 mm**

Motor: **1.5kW 1PH 240V 50Hz**

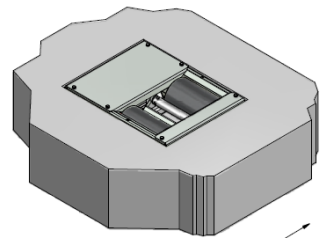
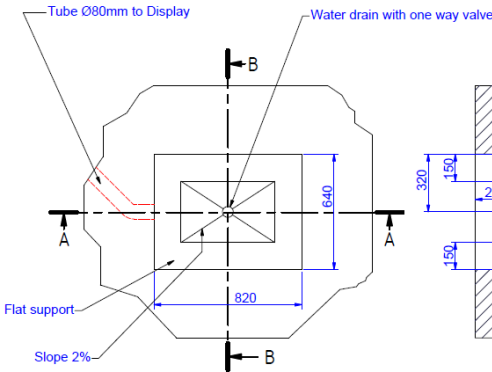


All our MOT Testing Equipment is approved by

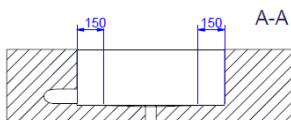


<b>altesco</b>	Dimension range mm	
	$> 0,5$   $> 3$   $> 6$   $> 30$   $> 120$   $> 400$   $> 1000$   $> 2000$   $> 4000$   $> 8000$ $-3$   $-6$   $-30$   $-120$   $-400$   $-1000$   $-2000$   $-4000$   $-8000$   $-12000$	
	Tolerance mm	
	$\pm 0,05$   $\pm 0,1$   $\pm 0,2$   $\pm 0,3$   $\pm 0,5$   $\pm 0,8$   $\pm 1,2$   $\pm 2$   $\pm 3$   $\pm 4$	
Drachmeweg 26	Titel	Dimensional drawing RT800/W
2153PA Nieuw Vennepp NL	Material	
T: +31-88-2583700	Finish	
F: +31-88-2583790	Drawing nr.	312983
A3	Scale	
	Drawn by	PB
	Date	28-4-2010

REVISION HISTORY				
ZONE	REV	DESCRIPTION	DATE	APPROVED
1		update	22-12-2009	PB



Driving Direction



- NOTES:
- Dimensions in mm.
  - General tolerance in the drawing  $-0, +5\text{mm}$ .
  - Admissible floor load  $>30 \text{ kN/m}^2$ .
  - Recommended distance between RT and display: 2.5-5m.
  - Use PVC conduits  $\varnothing 80\text{mm}$  between RT and display.
  - Equipment dimensions bed:  $80 \times 62 \times 31\text{cm}$
  - Max. electrical connection: 3phase 400v/50Hz/16A, motor 1.5kW.  
1phase 240v/50Hz/25A, motor 2.2kW.

<b>altesco</b>	Dimension range mm	
	$> 0,5$   $> 3$   $> 6$   $> 30$   $> 120$   $> 400$   $> 1000$   $> 2000$   $> 4000$   $> 8000$ $-3$   $-6$   $-30$   $-120$   $-400$   $-1000$   $-2000$   $-4000$   $-8000$   $-12000$	
	Tolerance mm	
	$\pm 0,05$   $\pm 0,1$   $\pm 0,2$   $\pm 0,3$   $\pm 0,5$   $\pm 0,8$   $\pm 1,2$   $\pm 2$   $\pm 3$   $\pm 4$	
Drachmeweg 26	Titel	Floor plan RT800 (W)
2153PA Nieuw Vennepp NL	Material	
T: +31-88-2583700	Finish	
F: +31-88-2583790	Drawing nr.	301833 rev.01
A3	Scale	1:15
	Drawn by	PB
	Date	22-12-2009

**DISCLAIMER**  
 This drawing is intended as a general suggestion of a floor lay-out. The final construction must be designed and drafted by a local engineering company, who will be responsible for complying with all local, legal and safety requirements.