

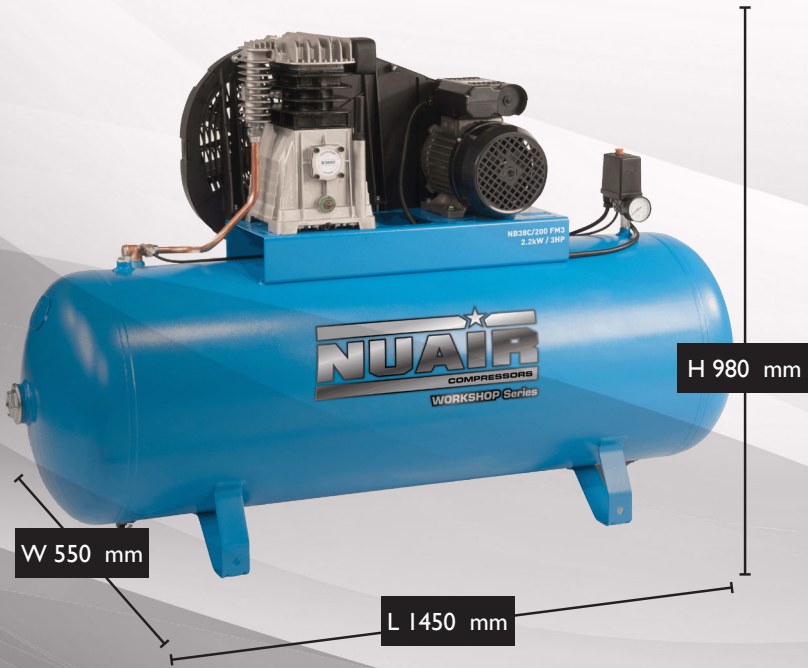
DATA SHEET

NB38C-200 FM3

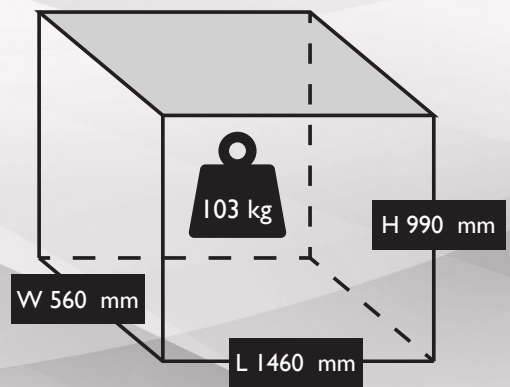
S-36LN504FPS014



UNIT DIMENSIONS



PACKAGE DIMENSIONS



TECHNICAL DATA

	Max. Pressure	10 Bar / 145 PSI
	Power	3.0 HP / 2.2 kW
	Capacity (displacement)	13.95 CFM / 395 L/Min
	Voltage	230V / 50 Hz
	Supply	16 A
	FLC	15
	Pump	B38B (370000B)
	dB(A)	77
	Dimensions L x W x H (unit)	1450 x 550 x 980 mm

	Dimensions L x W x H (boxed)	1460 x 560 x 990 mm
	Weight	103 kgs
	Motor Speed	2850 RPM
	Oil Capacity	1 Ltr
	Receiver Size	200 Ltr
	Head Bolt Torque	27 Nm
	Cable Length	2 Mtr
	Pump Speed	1250 RPM
	Outlet Thread Size	Series 25 Coupling



E & OE
Images shown are for illustration and may vary from the actual product

Unit 5, Tower Estate,
Warpsgrove Lane,
Chalgrove,
Oxon,
OX44 7XZ

Tel: +44(0)1865 892620
Fax: +44(0)1844 390955

sales@fps-compressors.co.uk
www.fps-compressors.co.uk

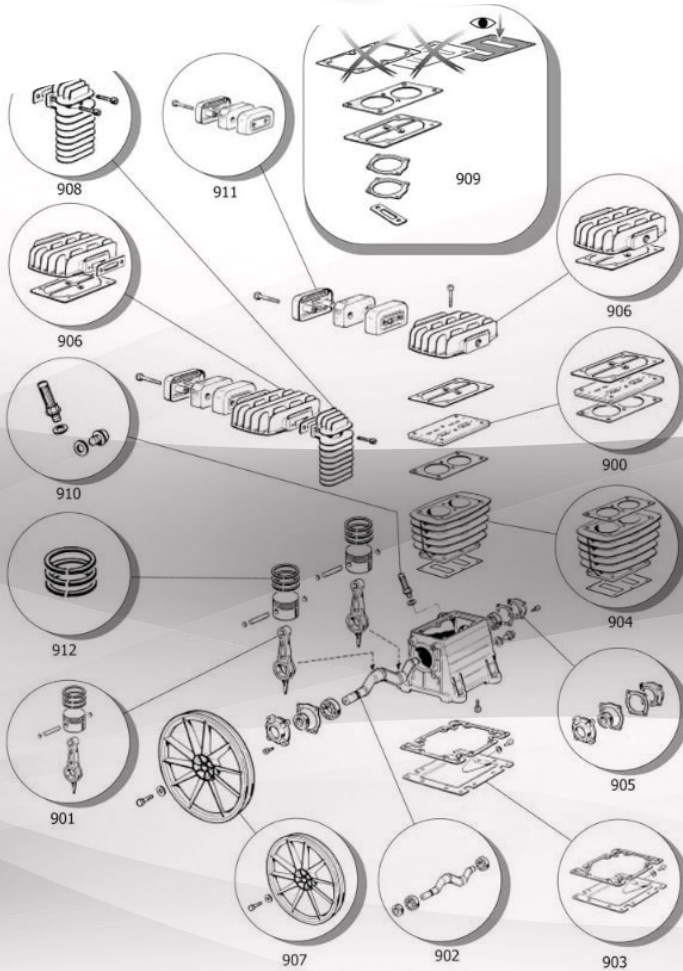


DATA SHEET

B38B PUMP

370000B

NB38C-200 FM3 (S-36LN504FPS014)



COMPONENTS / SERVICE PARTS

Position	Part No.	Description
900	S-9418001	Valve Plate
901	S-9428010	Piston & Con Rod Compl
904	S-9428042	Cylinder Kit
909	S-9428090	Gasket Kit
906	S-9428061	Head Kit
911	S-9428110	Air Filter Kit
912	S-9428120	Piston ring kit

Part No.	Description
S-PK-B28.B38	Service Kit
S-9602024	NRV Pastel
S-9602018	NRV Spring
S-9048003	NRV
S-4100688	Pressure Switch
LUB-PIST-ILT	Lubricant
S-9612113	Run Capacitor
F-009200105	Start Capacitor



E & OE
Images shown are for illustration and may vary from the actual product

Unit 5, Tower Estate,
Warpsgrove Lane,
Chalgrove,
Oxon,
OX44 7XZ

Tel: +44(0)1865 892620
Fax: +44(0)1844 390955

sales@fps-compressors.co.uk
www.fps-compressors.co.uk

